

Product Portfolio

TANDBERG

Management Suite



One management platform for all your visual communication needs. TANDBERG Management Suite (TMS) is scalable, easy to use and integrates with existing applications to increase ROI. TMS also provides complete visibility and control for on-site and remote video systems.

MANAGEMENT SUITE

- Intuitive user interface with graphics
- Detailed system-by-system and conference-by-conference details
- Manage endpoints and infrastructure directly
- Schedule calls, book rooms and invite participants using TANDBERG Scheduler, Microsoft Outlook® or IBM Lotus Notes® (requires software option)
- Supports Microsoft Office Communicator and IBM Lotus Sametime software options
- Supports management of network and video equipment from multiple vendors
- Fully manage registered systems outside your network

MANAGEMENT SERVER

- Optional turn-key solution for managing small- to mid-size installations
- Easy-to-deploy, standards-based system integrates into existing network
- Compact size: 1U tall and 19" rack mountable

TANDBERG

Video Communication Server



A powerful platform designed to work with any H.323 or SIP device, supporting up to 2,500 registrations and 200 zones.

CONTROL APPLICATION

- The center of the video network, supporting all infrastructure, management and endpoints
- Provides call control, gatekeeper and SIP registrar services to H.323 and SIP devices
- Provides H.323 to SIP Interworking
- Key device to interoperability with Unified Communications and VoIP systems
- Available with FindMe™ application option
- Multiway™ feature easily integrates multiple-party video calls

EXPRESSWAY™ APPLICATION

- Firewall Traversal for SIP and H.323 devices
- Firewall Traversal H.460.18/19 and STUN compliant

TANDBERG

Telepresence HD



The ultimate telepresence experience. Beautiful, immersive and simple. Bring your team together immediately in a well-appointed room for a lifelike, face-to-face meeting. With telepresence, nothing gets in the way of productivity.

- Highly immersive — meet as if you are in the same room
- Absolute quality in video and audio — high definition up to 1080p with options for one or three 65" custom LCD screens
- Options for Telepresence T3 with three screens or Telepresence T1 with a single screen. The same superior experience, scaled to meet your requirements
- Base product includes system, table, one personal HD touch collaboration screen and studio lighting
- Option to add premium wood walls, TANDBERG Blue nordic sky-inspired light package, chairs and a bench for additional seating

TANDBERG

Personal Telepresence 1700 HD



Personal telepresence designed for the office, the 1700 MXP features a superior HD camera and a widescreen LCD. This fully integrated system enables seamless face-to-face telepresence collaboration right at the desktop.

- Integrated 20" wide-screen LCD monitor
- Up to 2 Mbps H.323/2 Mbps SIP/2.3 Mbps total MultiSite
- Compact HD camera
- Join up to 4 video sites and 3 audio sites with embedded MultiSite functionality
- Easily share PC presentations
- True CD-quality and stereo
- Expressway firewall traversal

TANDBERG

Telepresence Server HD



With the TANDBERG Telepresence Server it doesn't matter who you need to reach. For the first time, bring together telepresence, HD and standard endpoint users in the same conference...all while maintaining the full telepresence experience.

- Continuous Telepresence and TelepresenceView ensure the telepresence experience is always maintained
- Support for round-table and room-switched configurations
- Future proof with the facility to scale up conference sizes as your organization grows
- Designed to carrier class levels of reliability and availability
- Up to 135 screens in a single chassis
- High-definition transcoding for every participant

TANDBERG

Codec C90 HD



The TANDBERG Codec C90 is the most powerful, flexible telepresence and collaboration engine available. The integration possibilities are endless.

- Optimal Definition up to 1080p
- Up to 6 Mbps point-to-point H.323/SIP; up to 10 Mbps total MultiSite bandwidth
- 720p30 HD Individual Transcoding embedded MultiSite
- Connect up to 12 HD sources and 8 microphones directly into the interface
- 5 simultaneous video inputs
- HD collaboration with UXGA
- Full Duplex Audio with High-Quality Stereo Sound
- Standards compliant; part of the TANDBERG Total Solution

TANDBERG

Profile HD



The next generation 1080p HD team collaboration solution. Easily share presentations and multimedia to spark ideas and generate better results.

- Sleek Scandinavian design brings teams face to face at the touch of a button
- Fully integrated system with 1080p widescreen LCD, PrecisionHD 1080p camera and Codec C90
- Clear, smooth HD collaboration with UXGA** and Full 1080p HD 720p30 HD embedded MultiSite with Individual Transcoding*
- Choice of network up to 6 Mbps point-to-point (H.323/SIP)/up to 10 Mbps MultiSite* (H.323/SIP)

Product Portfolio

TANDBERG

Codec C60 HD



The next generation, 1080p HD video collaboration engine. Designed with the integrator in mind, the C60 provides the flexibility to incorporate 1080p video and collaboration into a broad range of team-based applications.

- Optimal definition up to 1080p
- H.323/SIP up to 6 Mbps point-to-point
- 720p30 HD embedded MultiSite with individual transcoding*
- Connect up to 5 HD sources and 4 microphones directly into the interface
- HD Collaboration with 1080p30 and UXGA**
- Professional-grade connectors
- Full APIs

TANDBERG

Profile 6000 MXP HD



A high-performance HD team-meeting solution for both IP and ISDN networks. Easily share presentations and multimedia.

- Fully integrated system with 52" widescreen HD LCD, PrecisionHD 720p camera and 6000 MXP Codec
- Optimal definition up to 720p
- Join up to 6 video and 5 audio sites with embedded MultiSite functionality
- Choice of Network: up to 2 Mbps ISDN or external network (H.320)/4 Mbps IP (H.323 or SIP)/6 Mbps in MultiSite
- Multiway™ feature easily integrates multiple-party video calls

TANDBERG

Profile 3000 MXP HD



For medium-sized meeting rooms. A complete, integrated system in a compact package. Integrated audio module for CD-quality sound experience.

- Fully integrated system with 42" widescreen LCD, PrecisionHD 720p camera and 3000 MXP Codec
- Standard wall mount with pedestal or optional wheel base
- Up to 2 Mbps H.323/2 Mbps SIP/512 kbps H.320/2.3 Mbps total MultiSite
- Join up to 4 video and 3 audio sites with embedded MultiSite functionality
- Easily share PC presentations
- Multiway™ feature easily integrates multiple-party video calls

TANDBERG

Quick Set C20



The TANDBERG Quick Set C20 is a simple but powerful room-based video collaboration system that delivers 1080p quality video at an outstanding value.

- Transform any HD display into a meeting place
- Simple intuitive connections make set up as easy as connecting a DVD player
- Optional 1080p30 or 720p60 resolution
- Share multimedia and presentations at the touch of a button
- Up to 4 Mbps H.323/SIP point to point

TANDBERG

Edge 95/85/75 MXP HD



Connect team members for more productive meetings with the TANDBERG Edge MXP Series. These easy-to-install units turn a meeting room with a flat screen into a high-definition, interactive situation room for improved teamwork and accelerated decision-making.

- Up to 2 Mbps H.323/2 Mbps SIP/512 kbps H.320/2.3 Mbps total MultiSite
- TANDBERG PrecisionHD 720p camera
- Join up to 4 video sites and 3 audio sites with embedded MultiSite functionality
- Easily share PC presentations
- True CD-quality audio and stereo
- Wireless capable
- Multiway™ feature easily integrates multiple-party video calls

TANDBERG

Maestro MXP HD



For medium- to large-sized meeting rooms. Built on the TANDBERG 6000 MXP Codec, the Maestro turns existing monitors and displays into interactive video systems.

- Leverages existing large-screen displays and projectors
- TANDBERG PrecisionHD 720p camera
- Join up to 6 video sites and 5 audio sites with embedded MultiSite functionality
- Up to 4 Mbps H.323/4 Mbps SIP/2 Mbps H.320/6 Mbps total MultiSite
- True CD-quality stereo and Digital NAM
- Multiway™ feature easily integrates multiple-party video calls

TANDBERG

PrecisionHD™ USB Camera



The TANDBERG PrecisionHD™ USB Camera is the first camera in its class to support full business quality HD video communications.

- Supports true 720p HD quality with up to 30fps in widescreen format
- Best-in-class CD audio capabilities capturing the widest range of sound
- Easy to use, driverless design. No time consuming software installations
- Integrated privacy shutter and LED "In Call" indicator, providing the ultimate control over when you are seen

TANDBERG

Set-top 990/880/770 MXP



Portable, high-performance set-top units designed for work environments ranging from medium and small meeting rooms to shared offices. These compact units conveniently transform any standard TV into an interactive meeting place, providing users with an outstanding business tool.

- Up to 2 Mbps H.323/2 Mbps SIP/512 kbps H.320/2.3 Mbps total MultiSite
- Join up to 4 video sites and 3 audio sites with embedded MultiSite functionality
- Easily share PC presentations
- True CD-quality audio and stereo
- Wireless capable
- Multiway™ feature easily integrates multiple-party video calls

TANDBERG

E20



Reinvents the desk phone by merging business quality video and the best VoIP phone into one device.

- Ultra-wideband 20 kHz speakerphone
- High-resolution TANDBERG camera with integrated privacy shutter
- 10.6" wide format LCD display with WXGA resolution
- Intuitive user interface and keypad for quick access to all IP phone and video services
- Highly scalable and manageable
- Up to 1152 kbps SIP with w448p video resolution

Product Portfolio

TANDBERG

Movi HD



Movi enables PC users with a webcam to join an enterprise-wide videoconferencing network and communicate visually with colleagues for enhanced productivity from anywhere they need to work.

- Extend video to the PC for the entire enterprise
- Centrally managed by TANDBERG Management Suite (TMS)
- Optimal definition up to 720p
- Secure, standards based firewall traversal with VCS Expressway
- Industry's best audio: G.722.1/G.711 and acoustic echo cancellation
- Rich presence awareness

TANDBERG

Centric 1000 MXP



For offices and small groups. Fully integrated system delivers style and performance in equal measure.

- Integrated 12.1" LCD
- Up to 768 kbps H.323/768 kbps SIP/384 kbps H.320
- Easily share PC presentations
- Wireless capable
- True CD-quality audio
- Video telephony version available for Cisco® CallManager
- Multiway™ feature easily integrates multiple-party video calls

TANDBERG

Intern MXP* HD



Video systems designed for healthcare applications including consultations, clinical studies and CME. Connect healthcare professionals and patients across the globe.

- High-resolution 23" wide-screen LCD for viewing clinical and non-clinical images
- Tested and listed to UL/CSA 601.1 regulatory standards for approval in patient contact environment
- Choice of Edge MXP with PrecisionHD 720p camera or Set-Top with Wave camera
- Add peripheral medical and non-medical devices
- Multiway™ feature easily integrates multiple-party video calls

TANDBERG

Education Series*



Going beyond traditional needs of both instructors and students, the TANDBERG Education Series offers extensive options for corporate training, school classrooms and higher education.

- Multiple education products to meet specific application needs and room sizes
- Designed with input from educators to meet the demands of the education environment
- Intuitive touch panel facilitates simple instructor control

TANDBERG

Tactical MXP*



Portable and compact video communication tool for use in even the most remote and extreme conditions. Fully integrated and wireless system is ideal for off-site communication such as construction sites, manufacturing floors, defense operations and in-field media correspondence.

- Integrated 15.4" wide-screen LCD
- Fully integrated video system in a heavy-duty watertight case
- Meets most airline carry-on requirements
- Complete TANDBERG 3000 MXP core technology
- Ability to integrate Type 1 encryption devices
- Multiway™ feature easily integrates multiple-party video calls

TANDBERG

FieldView™



Fully integrated, wireless handheld video device for use anywhere your workforce needs to be. Visually exchange critical information with remote engineering or home office support to assess and resolve issues in real time.

- Designed to deliver the ultimate portability in video collaboration
- Available in FieldView, FieldView Rugged and FieldView EX versions
- Integrated 802.11 b/g wireless LAN
- Two-way voice and one-way video collaboration
- Ability to call from the FieldView Device directly into a video endpoint
- FieldView Enterprise Suite offers flexibility for larger installations through a FieldView Application license manager
- Secure, standards based firewall traversal with VCS Expressway
- Available with optional FieldView Enterprise and FieldView Management suite

TANDBERG

MPS Series



The TANDBERG Media Processing System (MPS 800, MPS 200) is ideal for enterprises requiring ISDN, V.35 and IPV6 support. Its gateway capabilities also enable seamless integration of the TANDBERG Codian MCU 4,500 for high-definition applications.

- Industry leading multi-network standard definition MCU
- Multi-protocol capability including H.320, H.323 and SIP
- IPv4 and IPv6 capable
- Developed with emphasis on security compliance; ideal for government environments

TANDBERG

Codian MSE 8000 HD



The TANDBERG Codian MSE 8000 is a high-capacity voice and videoconferencing media services engine. This powerful, fault tolerant solution is ideal for the large scale communication needs of large enterprises and service providers.

- High redundancy, built to telecom specifications, dual power inputs
- Conferencing, gateway and recording blades in the same chassis
- Up to 180 HD conferencing, 360 SD conferencing, 720 audio conferencing, and 90 recording ports; up to 72 ISDN PRI's
- Supports TANDBERG Codian ClearVision™ and UniversalPort™ technology

TANDBERG

Codian MCU 4500 HD



The most powerful HD MCU available, the TANDBERG Codian MCU 4500 delivers full continuous presence for all conferences, full transcoding and is ideal for mixed vendor HD endpoint environments.

- Integration with TANDBERG Management Suite
- Individual transcoding enables the best conference for every endpoint regardless of capabilities
- ClearVision utilizes Codian's vast processing power to enhance SD endpoints
- Available in 12-, 20-, 30- and 40-Port options full HD

Product Portfolio

TANDBERG

Codian MCU 4501



The TANDBERG 4501 is a high-definition, entry-sized conferencing bridge, compatible with all major vendors' SD and HD endpoints to provide an industry leading experience for every participant.

- Port sizes starting at 6 ports HD & 12 ports SD with the ability to upgrade
- Able to switch from SD to HD mode, providing a seamless transition path to HD
- Video resolutions up to 720p at 30fps; future proofed for 1080p and 60fps
- Integrated with TANDBERG Management Suite (TMS)
- Upscaled SD resolution using TANDBERG Codian ClearVision™

TANDBERG

Codian MCU 4200



The TANDBERG Codian MCU 4200 is a powerful IP multimedia conferencing bridge, delivering high-quality voice and video with an easy-to-use, versatile interface. It's ideal for the small to medium-size enterprise and education markets.

- Individual transcoding for each user provides the highest quality experience regardless of endpoint
- Available with limited gatekeeper and scheduling capabilities — great for small clients
- Available in 6, 12, 20, 30 and 40 SD and Optimal Definition Ports

TANDBERG

Content Server ^{HD}



With the TANDBERG Content Server, you can create business-quality multimedia content easily from any standards-based H.323 or SIP videoconferencing endpoint. Access on-demand video content anywhere, anytime from any PC.

- Stream and record up to five concurrent video and H.239 dual stream presentations
- Stream content in Microsoft Windows Media®, QuickTime compatible MPEG-4 and RealPlayer® formats
- Download content to popular portable devices: Microsoft Zune, Apple iPod
- Expressway compatible
- High-definition, wide-format video support

TANDBERG

Codian IP Gateway



An innovative gateway solution to let customers and partners find and connect with the person they are looking for. It offers powerful dial plans, an auto attendant and voice/video switchboard operators to route calls to the correct destination.

- Compatible with all major vendors' endpoints
- IVR/Auto Attendant
- Live operator switchboard support
- Video resolutions: up to 720p 30fps (non-transcoded)
- Powerful dial plans
- Bandwidth per site: H.263 up to 4 Mbps, H.264 up to 2 Mbps
- Support for both SIP and H.323 endpoints

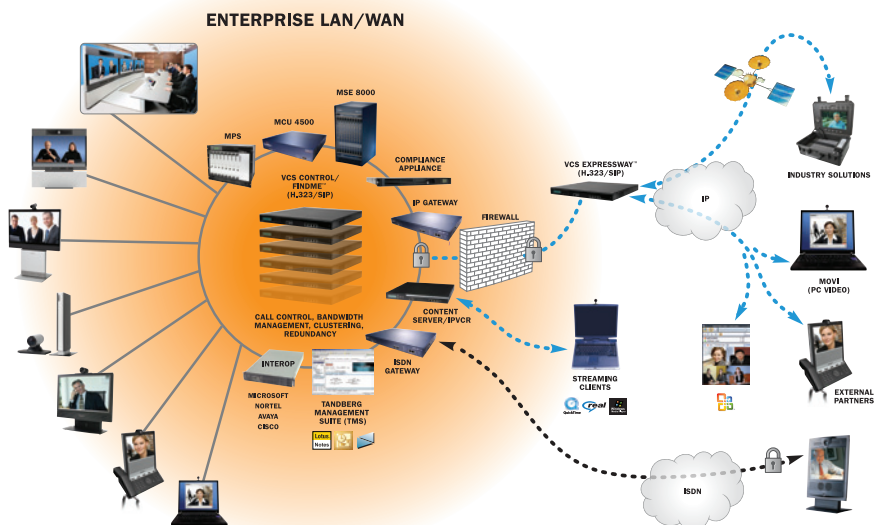
TANDBERG

Codian ISDN Gateway



A gateway that offers unparalleled simplicity. Provides seamless integration between IP and ISDN networks with complete feature transparency and protection from network interruptions.

- Compact size: 1U tall and 19" rack mountable
- Video resolution up to 720p HD
- Up to four ISDN PRIs in a single unit
- Provides seamless integration between IP-based services and ISDN
- Complete feature transparency
- Bandwidth per call: 56 kbps-2 Mbps
- Expressway firewall traversal



BEAM SCAN

Communications Pvt. Ltd.

The people behind your Presentations...

Address: #33/3, 8th Main Road,
12th Cross, Malleshwaram, Bangalore - 560 003, Karnataka, India
Phone No.: +91 80 2346 3159 Telefax: +91 80 2346 2279
E-Mail: ho@beamscan.in, beamscan@rediffmail.com
Website: www.beamscan.in